

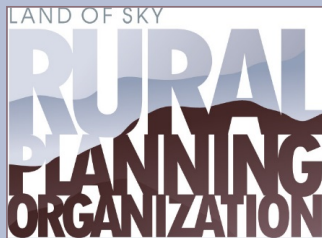
# Transylvania County Comprehensive Transportation Plan (CTP) Meeting #9

NCDOT Transportation Planning Division (TPD)

**Daniel Sellers, PE**

Land of Sky Rural Planning Organization (LOSRPO)

**Vicki Eastland**



# Welcome and Introductions

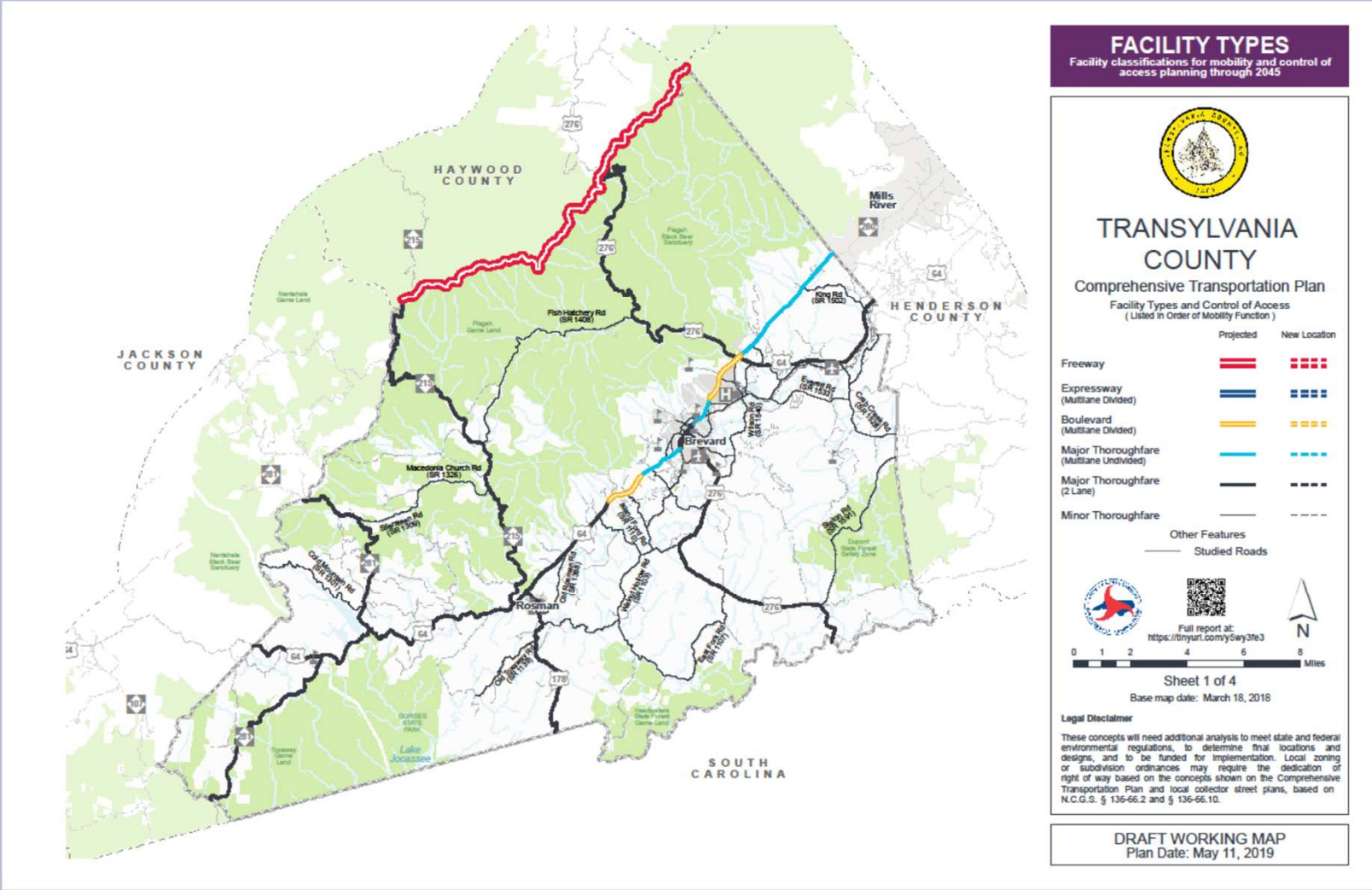


Vicki Eastland, LOSRPO  
October 19, 2021

# Agenda

- 3:00 PM Welcome and Introductions**
- 3:05 PM Recap**
- 3:20 PM Survey Comments and Edits**
- 3:30 PM Review Surveys**
- 4:15 PM Next Steps**
- 4:25 pm Next meeting Date**

# Recap of previous materials covered



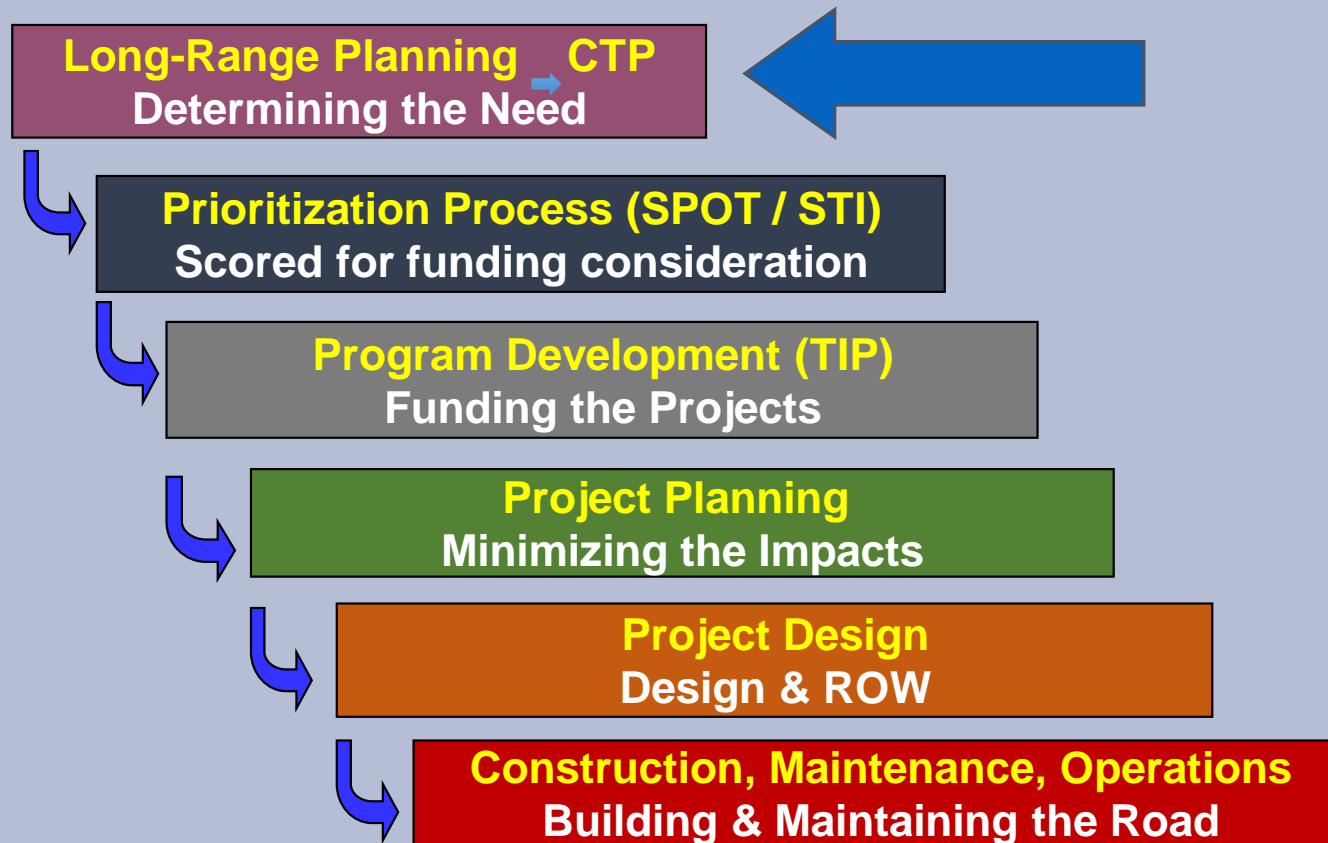
## What is a CTP?

- Comprehensive Transportation Plan
- Long-range, multi-modal transportation plan
  - 25-to-30-year planning period
  - System Focused Plan
- Incorporates land use plans, community & statewide goals
- Developed cooperatively among local stakeholders, Rural Planning Organization (RPO), and NCDOT

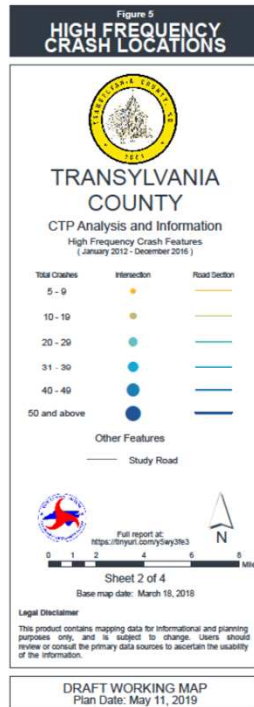
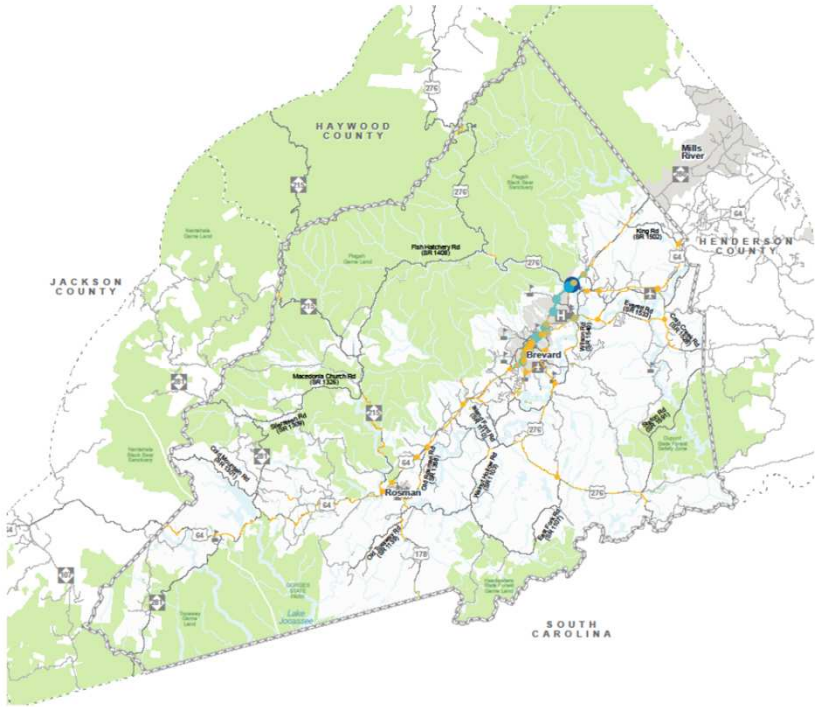
## What is a CTP?

- It strives to **anticipate future deficiencies** and provide **proposals to address each deficiency**
- It gives due **consideration** to the **human and natural environment**
- It is **accountable** to the **public** through the **formal public involvement process**

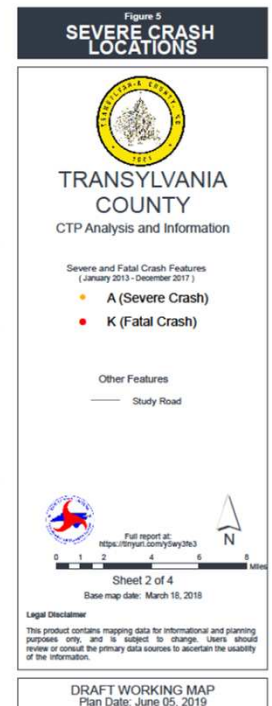
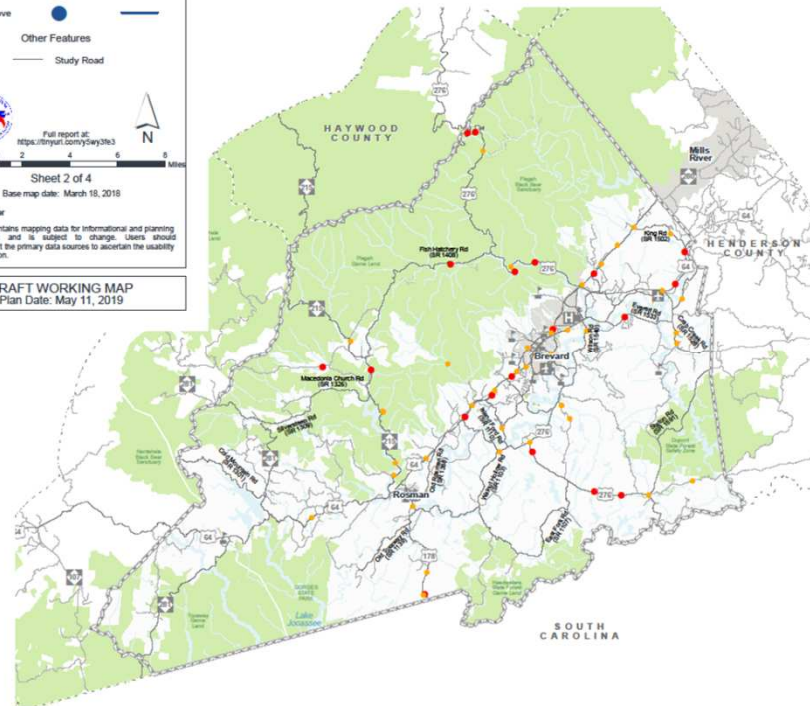
# Where does the CTP fit into the “Big Picture”?



# Reviewed High Frequency Crash Locations



# Reviewed Severe Crash Locations



# Reviewed Pedestrian Crash Locations

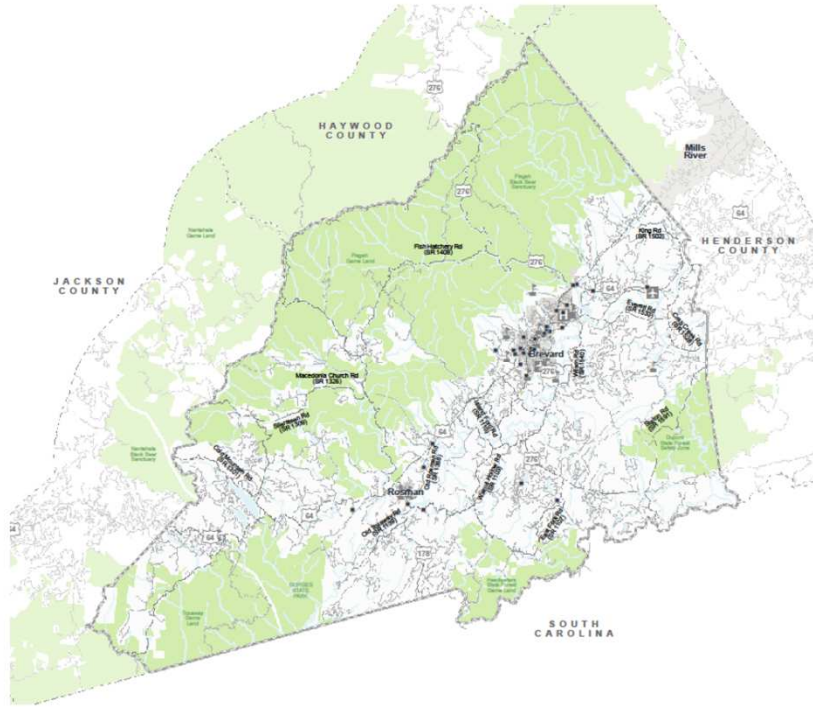
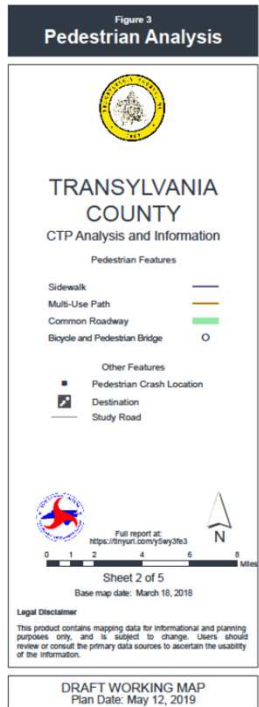


Figure 3  
Pedestrian Analysis



# Reviewed Bicycle Crash Locations

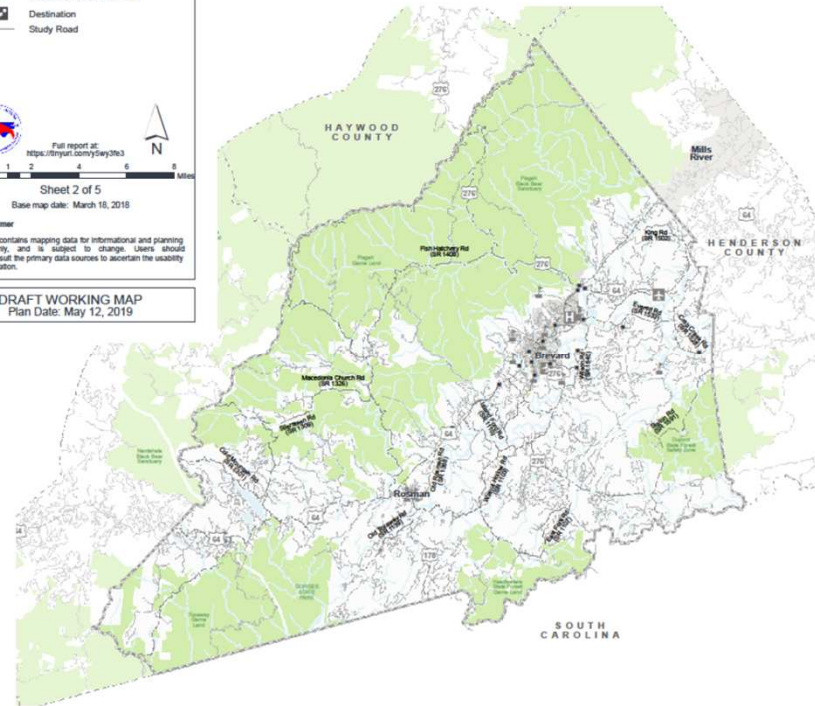
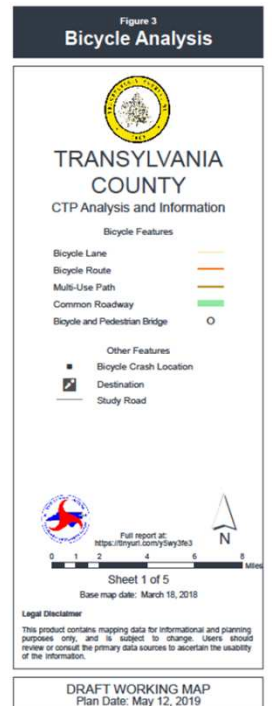
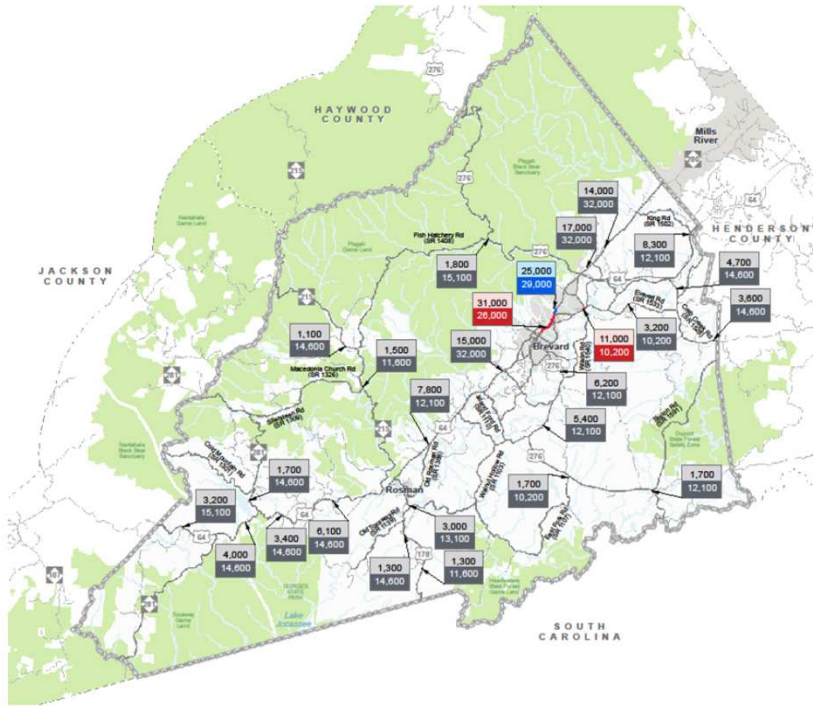


Figure 3  
Bicycle Analysis



# Reviewed 2017 Volume and Capacity



**Figure 2  
2017 VOLUME AND  
CAPACITY DEFICIENCIES**

**TRANSLYVANIA  
COUNTY**

CTP Analysis and Information  
Volume and Capacity Ratio Features  
(Base Year 2017)

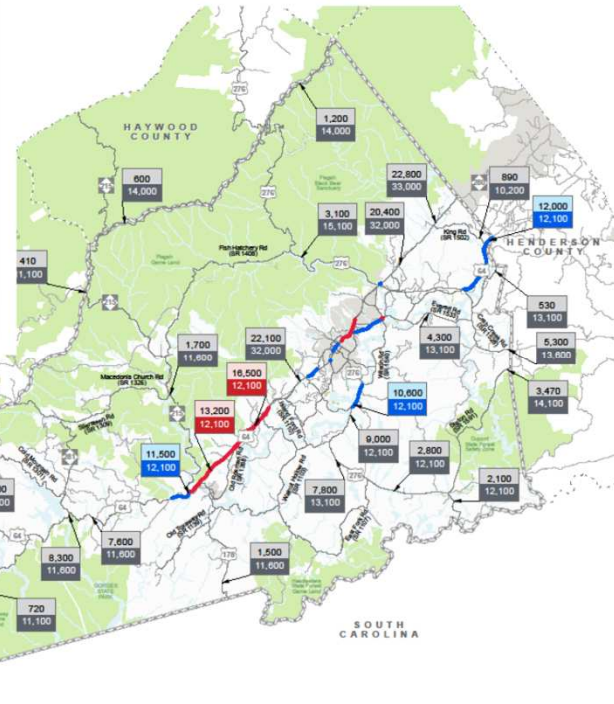
2017 Volume 2017 Capacity	Under Capacity (0-0.79)
2017 Volume 2017 Capacity	Near Capacity (0.80-0.99)
2017 Volume 2017 Capacity	Over Capacity (1.00+)

Full report at: <https://trnyr.com/way363>

Sheet 1 of 2  
Base map date: March 18, 2018

**Legal Disclaimer**  
This product contains mapping data for informational and planning purposes only, and is subject to change. Users should review or consult the primary data sources to ascertain the usability of the information.

**DRAFT WORKING MAP**  
Plan Date: May 12, 2019



**Figure 2  
2045 VOLUME AND  
CAPACITY DEFICIENCIES**

**TRANSLYVANIA  
COUNTY**

CTP Analysis and Information  
Volume and Capacity Ratio Features  
(Future Year 2045)

2045 Volume 2045 Capacity	Under Capacity (0-0.79)
2045 Volume 2045 Capacity	Near Capacity (0.80-0.99)
2045 Volume 2045 Capacity	Over Capacity (1.00+)

Full report at: <https://trnyr.com/way363>

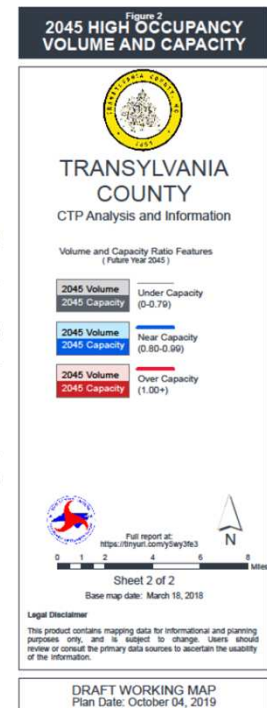
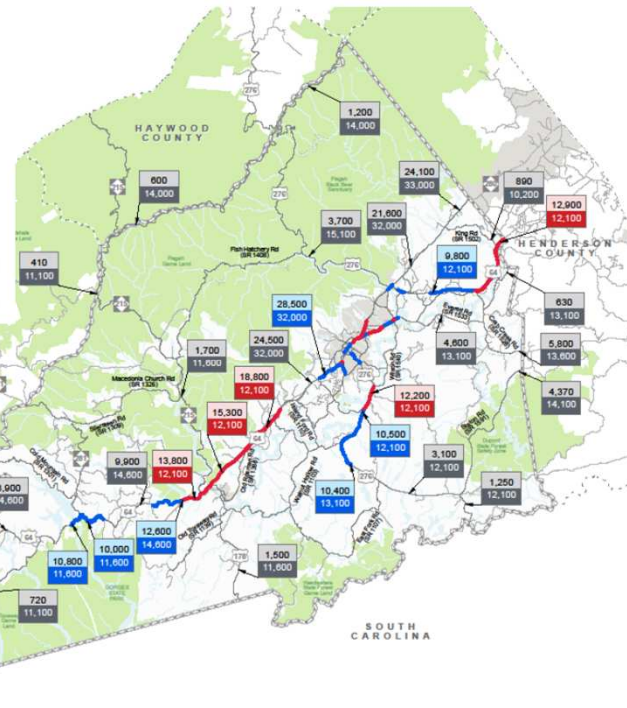
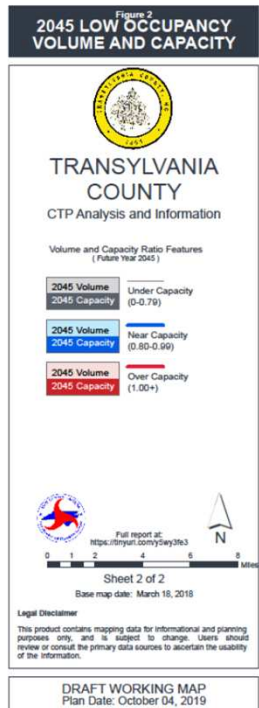
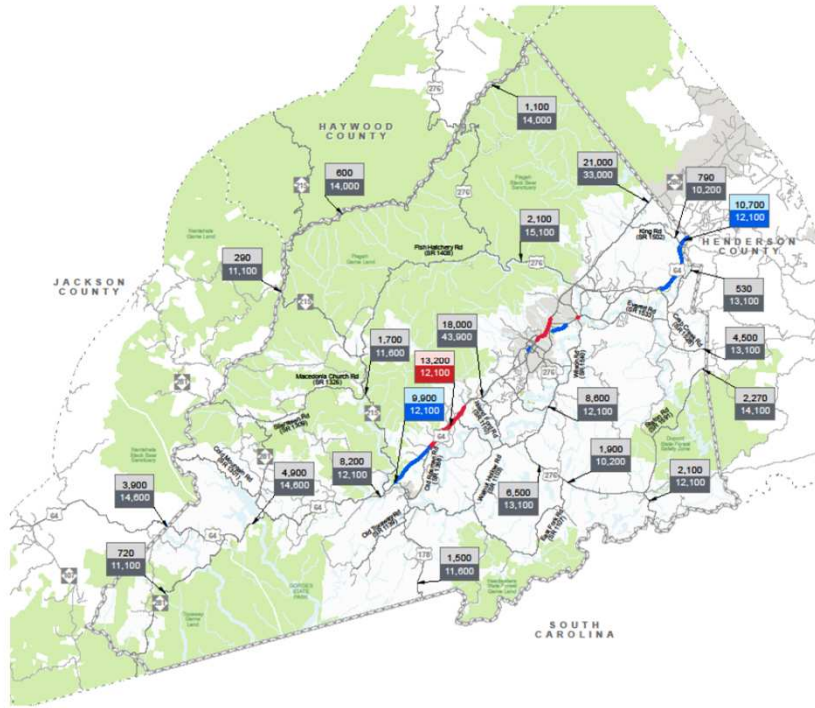
Sheet 2 of 2  
Base map date: March 18, 2018

**Legal Disclaimer**  
This product contains mapping data for informational and planning purposes only, and is subject to change. Users should review or consult the primary data sources to ascertain the usability of the information.

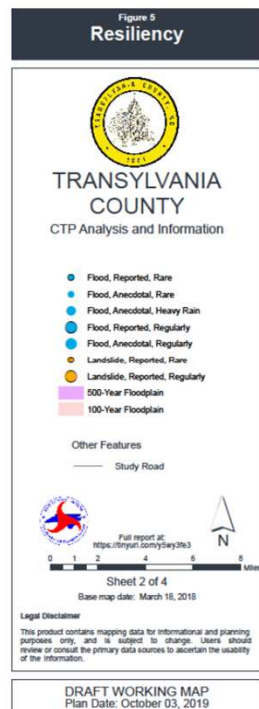
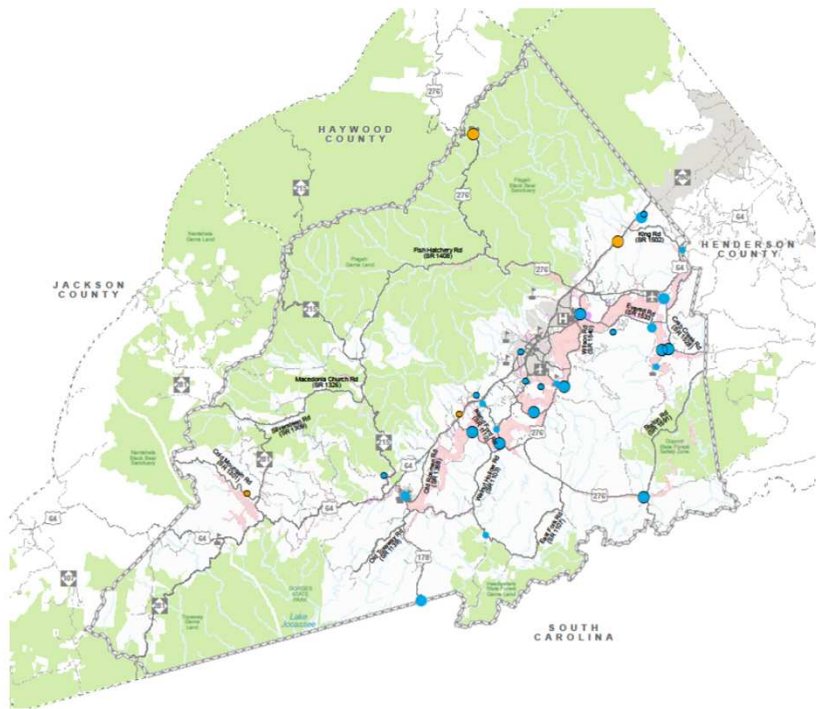
**DRAFT WORKING MAP**  
Plan Date: October 04, 2019

# Reviewed 2045 Projected Volume And Capacity

# Reviewed 2045 Seasonal Projections LOW Occupancy



# Seasonal Traffic Projections HIGH Occupancy



# Transportation System Resiliency

## Resiliency maps. (Mark-up exercise)

- Large format maps of Resiliency available on tables
- Review maps and identify any gaps or additional areas of concern
- Draw in additional Resiliency concerns (flooding/land and rockslides other resiliency concerns)

## Where we are now

### DRAFT Transylvania County Identified Highway and Public Transit Needs Survey

[Transylvania County CTP 2021 Recommendations Survey \(metroquestsurvey.com\)](https://metroquestsurvey.com)

### DRAFT Transylvania County Identified Pedestrian and Bicycle Needs Survey

[Transylvania County CTP - Bike and Ped \(metroquestsurvey.com\)](https://metroquestsurvey.com)

## Survey Comments Received so far...

- Bike/Ped not much distinction between lines can colors be changed
  - *Bike GIS data updated to show projects identified in prior plans as gray lines*
- On Highway survey color of boxes doesn't match line color
  - *Investigated but survey tool does not allow changes*
- Some of the photos in Highway projects don't reflect nature of the location.
  - *Have to work with stock images in survey tool, updated some of the photos.*

## Survey Comments Received so far...

- Give Guidance on how to make comments
- With respect to labels such as North Brevard, South Brevard etc. maybe highlight the area on the map.
- Possible disclaimer on the survey with regard to images not being actual projects.
- Link from the Bike and Ped to the Highway survey or vice versa were working.
- The viewer is rather small within the browser window
- Somehow explaining in the whole series of the slides for Bike/Ped projects, you look at you have to look at comprehensively. Different improvements types on each slide.
- Zero prioritization of projects.

# Public Outreach Strategy for Survey and Public Meeting

- Media outlets?
- Workgroup members share with networks
- Planning Department both city and county blast out to social media lists
- Other suggestions?

## Next Steps?

- Make requested edits to surveys, release to the public Nov. 1<sup>st</sup>
- Public input meeting week of Nov. 15-19
- Survey closes Nov. 30th compile results
- Hold CTP workgroup meeting week of Dec. 13 -17 to review survey results
- NCDOT begins drafting the plan

# What's the CTP going to look like?

## **Example of County Core CTP Document**

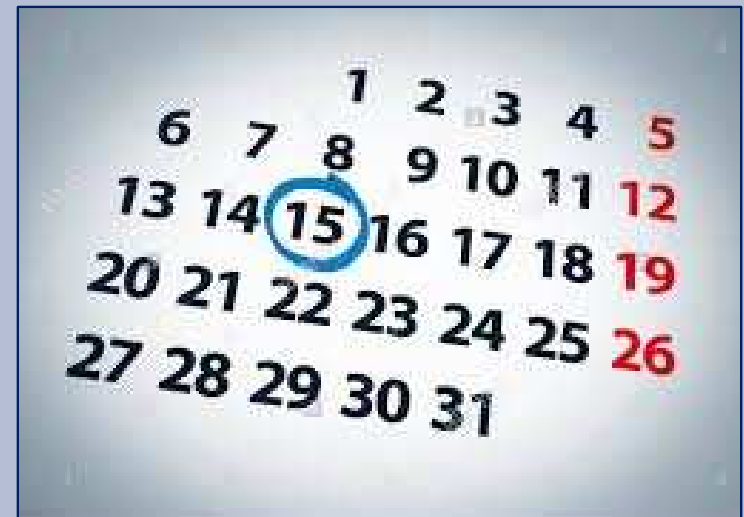
<https://connect.ncdot.gov/projects/planning/TPB%20Documents/Example-County-CTP-Core%20Section%202021-6-7.pdf>

## **Example of County CTP Appendix Document**

<https://connect.ncdot.gov/projects/planning/TPB%20Documents/Example-County-CTP-Appendix-2021-06-02.pdf>

# Future Meetings

- Public Meeting Nov. 16<sup>th</sup>  
Location TBP
- CTP Workgroup meeting Tentatively  
December 15<sup>th</sup> Location TBD.



## Contact info for your team

- Vicki Eastland, Land of Sky RPO, [vicki.eastland@landofsky.org](mailto:vicki.eastland@landofsky.org) 828-251-6622
- Daniel Sellers, NCDOT TPD, [dcsellers1@ncdot.gov](mailto:dcsellers1@ncdot.gov) 919-707-0978
- Steve Williams, NCDOT Division 14, [sjwilliams@ncdot.gov](mailto:sjwilliams@ncdot.gov) 828-586-2141
- Troy Wilson, NCDOT Division 14, [tswilson@ncdot.gov](mailto:tswilson@ncdot.gov) 828-586-2141
- Lonnie Watkins, NCDOT Division 14, [lnwatknis@ncdot.gov](mailto:lnwatknis@ncdot.gov) 828-891-7911



**QUESTIONS?**  
**COMMENTS?**